

Piston Type Flow Switch

General

DKI make compact type, magnetically actuated piston type flow switches are designed for positive detection of fluid flow through your equipment. FS series models provide adjustability over wide range. These are used in fluidlines carrying non-hazardous fluids like water, kerosene, very low viscosity lubricating oils, gas / air etc.

- Reed Switch : Hermetically Sealed
- Connector: DIN 43650 – PG – 9
- Protection Class : IP 65



FS-4S

Technical Data

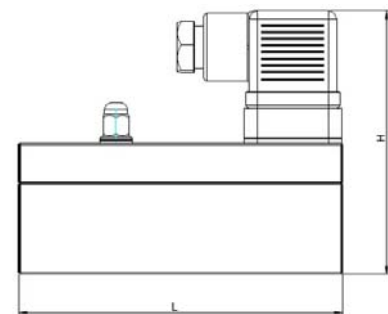
- Scale Tolerance – $\pm 5\%$ of full scale.
- Max. System Pressure – 10 Kg / cm²
- Temperature Range - 8° to 80° C
- Sensor Specifications – Hermetically Reed Switch
- Contact Rating* - 500 mA* / 1A 230 VAC 50 VA, 'NO' type contact
- Hysteresis – Depending on switch value, minimum 0.5 l / min.
- Available Port Sizes - 1/4" x 3/8", 1/2", 3/4", 1" BSP

Note: Fluid should very clean. Suspended particles may clog the flow switch which consequently affects the flow switch performance. Please take care of surge currents to avoid damage of Reed switch element. In such cases please apply R.C. (Resistor & Capacitor) network.

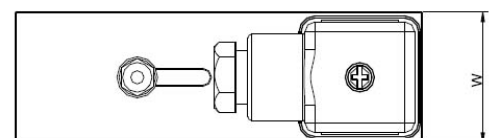
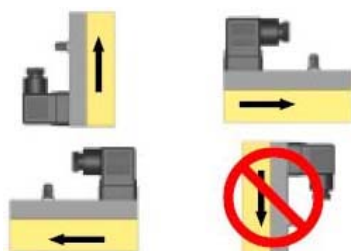
Line Size	Model No.	Recommended Max. Flow LPM of H2O	Adjustable Range		W Max. mm	H Max. mm	W Max. mm
			LPM of H2O	LPM of H2O			
1/4" – 8 mm	*FS- 2BAS/2BCAS/2BCAD...	10	0.4 – 4		22	78	85
3/8" – 10 mm	*FS- 3BAS/3BCAS/3BCAD...	20	0.4 – 4	1 – 10	22	78	75
1/2" – 12 mm	FS- 4BAS/4BCAS/4BCAD...	40	1 – 10	2 – 20	25	81	95
3/4" – 20 mm	FS- 5BAS/5BCAS/5BCAD...	60	3 – 30	4 – 40	40	96	116
1" – 25 mm	FS- 6BAS/6BCAS/6BCAD...	80	4 - 40	6 - 60	40	96	116

Material Composition

	Brass Version	SS Version
Housing :	Brass	304 SS
Float :	Brass	304 SS
Fittings :	Brass	304 SS



Mounting Instructions



Note: Flow Switch value may differ according to the type of installations.

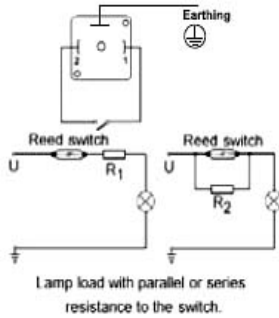
Electrical Installation

Maximum values of current and voltage must not be exceeded on the reed relay.

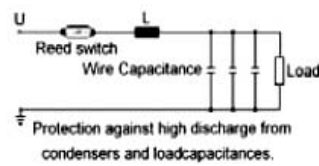
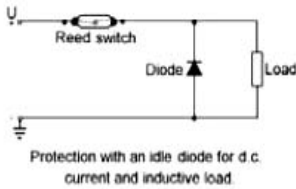
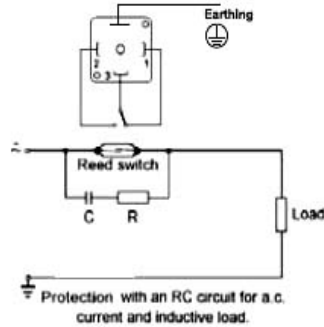
If driving inductive or capacitive loads, we recommend the use of a suitable isolation relay.

Electrical Connection

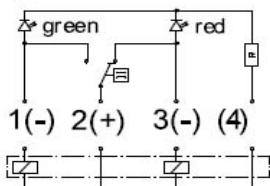
N/O Contact (SPST)



Changeover Contact (SPDT)



Wiring for 2 LED's



Important For Your Order

For placing order please fulfill following requirements.

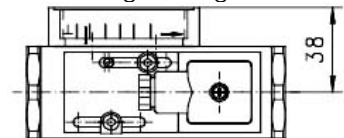
- System Pressure
- Desired Flow Range
- Fluid Temperature
- Fluid Characteristics (Physical & Chemical properties)
- In case of lub-oils, viscosity must be indicated.

Option

FS - 4SCADI2D Flow Switch with lateral flow metering

Adjustable range l/min H ₂ O	Metering range l/min H ₂ O
0.4 - 4	0.5 - 5
1 - 10	1 - 12
2 - 20	2 - 23
3 - 30	4 - 34
4 - 40	5 - 45
6 - 60	5 - 85

Metering range is indicated for horizontally increasing flc
Protection class IP 60, Additional weight 0.1 kg



BASIC MODEL EXAMPLE : FS - 3BCASID

LINE SIZE	EXAMPLE	OPTION
2	1/4" BSP	3
3	3/8" BSP	4
4	1/2" BSP	5
5	3/4" BSP	6
6	1" BSP	
M.O.C. WETTED PARTS		
S	STAINLESS STEEL	B
B	BRASS	
ELECTRICAL CONNECTION TYPE		
C	DIN CONNECTOR	C
Switch Setting		
A	ADJUSTABLE	A
-	FIXED TYPE	
REED SWITCH TYPE		
S	SPST	S
D	SPDT (CHANGE OVER)	
LED Indicator		
I	Single LED (RED)	I
I2	Dual LED	D
FLOW RATE INDICATION DIAL		
		D



D. K. Instruments Pvt. Ltd.

An ISO 9001:2008 Certified Company

76/2, Selimpur Road, Dhakuria, Kolkata - 700 031.

Ph. No.: 91-33-2415 1310 / 2405 0944, Fax: 91-33-2415 2311.

E-mail: info@dkinstruments.com, Web Site: www.dkinstruments.com

Marketed By: